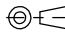
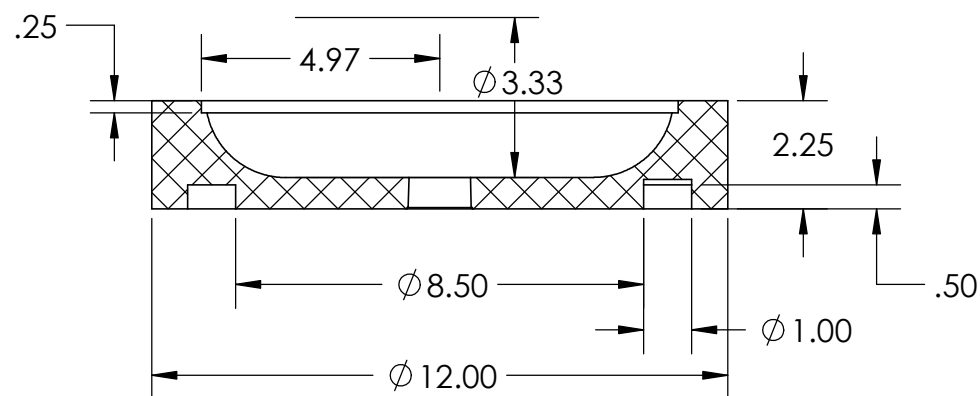
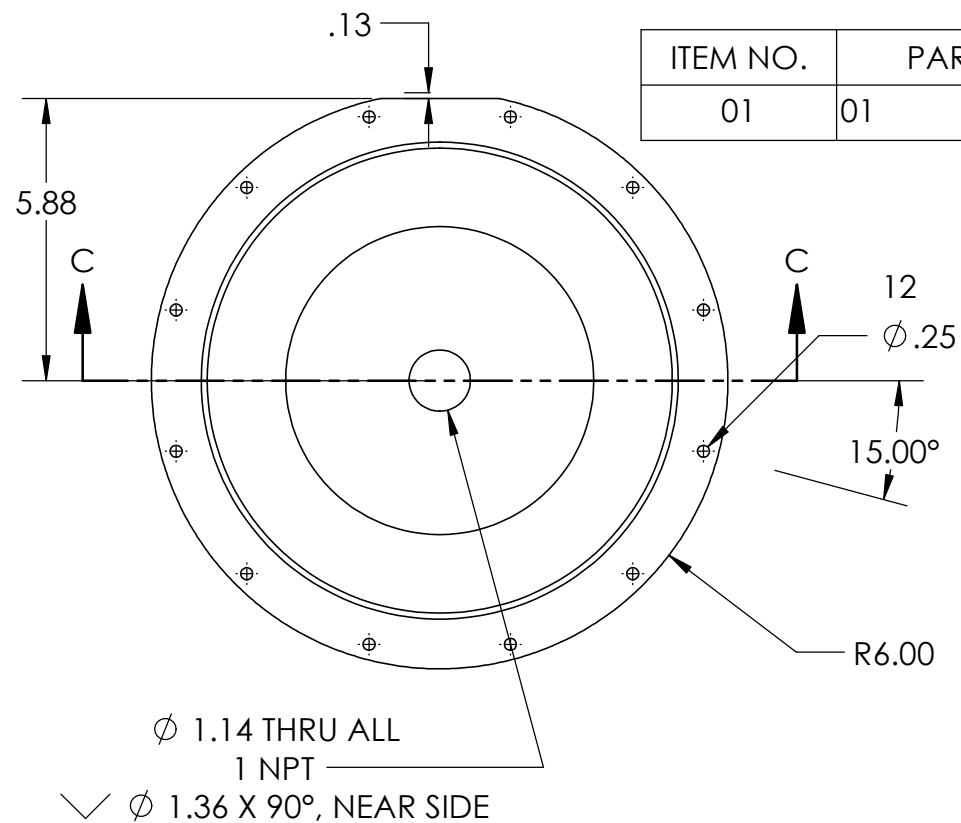
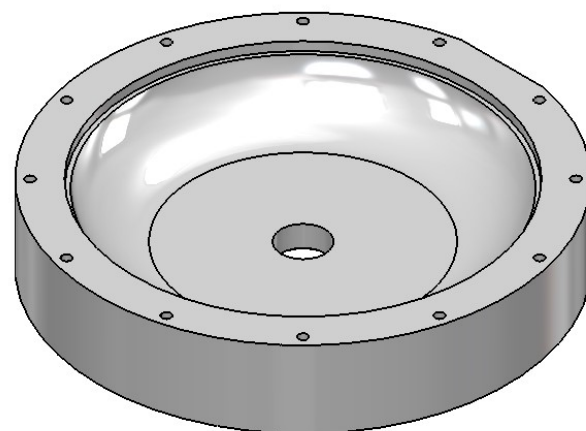


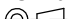
<b>PROPRIETARY AND CONFIDENTIAL</b> THE INFORMATION CONTAINED IN THIS DRAWING IS THE SOLE PROPERTY OF UNIVERSITY OF IDAHO, ME DEPARTMENT. ANY REPRODUCTION IN PART OR AS A WHOLE WITHOUT THE WRITTEN PERMISSION OF UNIVERSITY OF IDAHO, ME DEPARTMENT IS PROHIBITED.		DIMENSIONS ARE IN INCHES THIRD ANGLE PROJECTION 		Autophyte Activators	
		MATERIAL:			
DEFAULT TOLERANCES:		DESCRIPTION:		UNIVERSITY OF IDAHO ME DEPARTMENT	
LINEAR: X. ±.25 X.X ±.1 X.XX ±.01 X.XXX ±.002	ANGULAR: X. ±2 X.X ±1 X.XX ±0.30°	CHECKED BY: XXXXXXXXXXXX	DATE: XX/XX/XX		
		DRAWN BY:Nate Wiedenmeyer	DATE: 5/4/2018	PART #:	QTY:
		FILE NAME: Final Assembly.SLDPRT		SCALE: 1:96	SHEET: 1 OF 17



SECTION C-C  
SCALE 1 : 4

ITEM NO.	PART NUMBER	DESCRIPTION	QTY.
01	01	Nylon	1



<div>PROPRIETARY AND CONFIDENTIAL</div> <div>THE INFORMATION CONTAINED IN THIS DRAWING IS THE SOLE PROPERTY OF UNIVERSITY OF IDAHO, ME DEPARTMENT. ANY REPRODUCTION IN PART OR AS A WHOLE WITHOUT THE WRITTEN PERMISSION OF UNIVERSITY OF IDAHO, ME DEPARTMENT IS PROHIBITED.</div>		<div>DIMENSIONS ARE IN INCHES</div> <div>THIRD ANGLE PROJECTION</div> <div></div>		<div>Autophyte</div> <div>Activators</div>	
		<div>MATERIAL: Nylon</div>			
<div>DEFAULT TOLERANCES:</div> <div><div><div>LINEAR:</div><div>X. ±.25</div><div>X.X ±.1</div><div>X.XX ±.01</div><div>X.XXX ±.002</div></div><div><div>ANGULAR:</div><div>X. ± 2</div><div>X.X ± 1</div><div>X.XX ± 0.30'</div></div></div>		<div>DESCRIPTION: Base</div> <div><div>CHECKED BY: XXXXXXXXXXXX</div><div>DATE: XX/XX/XX</div><div>DRAWN BY: Nate Wiedenmeyer</div><div>DATE: 5/4/2018</div><div>FILE NAME: Final Assembly.SLDPR1</div></div>		<div>UNIVERSITY OF IDAHO</div> <div>ME DEPARTMENT</div>	
				<div>SCALE: 1:4</div> <div>SHEET: 2 OF 17</div>	

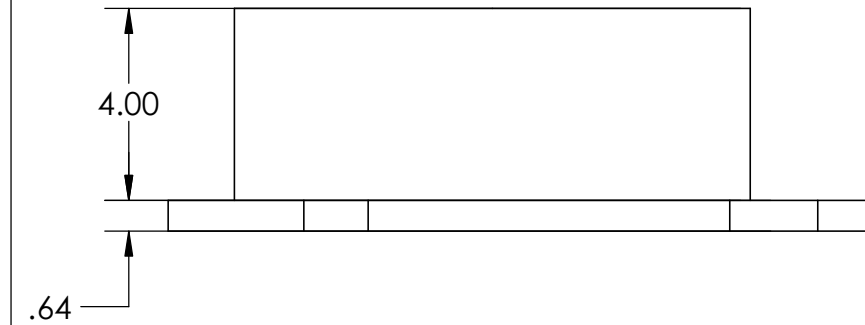
Technical drawing of a circular mechanical part, likely a flange or cover plate, showing dimensions and a table.

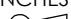
**Dimensions:**

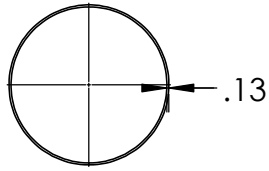
- Overall diameter:  $\phi 12.00$
- Inner diameter:  $\phi 10.02$
- Outer flange thickness:  $\phi .25$
- Inner flange thickness:  $\phi .37$
- Outer flange hole diameter:  $\phi .44$
- Inner flange hole diameter:  $\phi 11.38$
- Outer flange hole diameter:  $\phi 12$

**Table:**

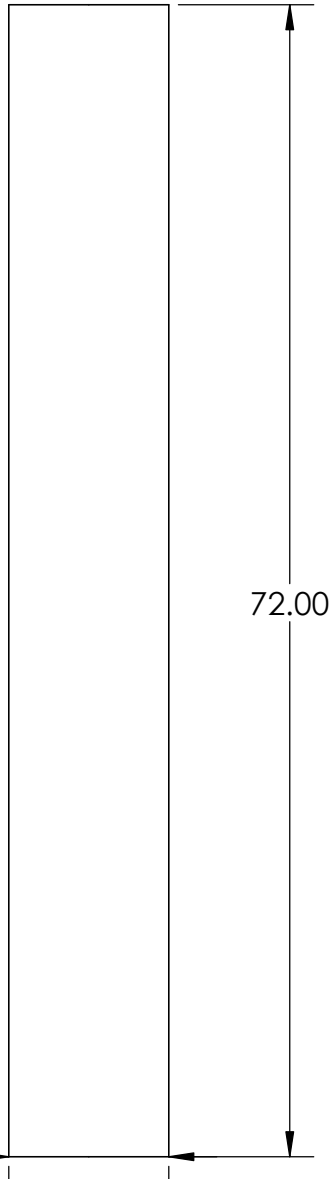
ITEM NO.	
02	02

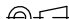


<b>PROPRIETARY AND CONFIDENTIAL</b> THE INFORMATION CONTAINED IN THIS DRAWING IS THE SOLE PROPERTY OF UNIVERSITY OF IDAHO, ME DEPARTMENT. ANY REPRODUCTION IN PART OR AS A WHOLE WITHOUT THE WRITTEN PERMISSION OF UNIVERSITY OF IDAHO, ME DEPARTMENT IS PROHIBITED.		DIMENSIONS ARE IN INCHES THIRD ANGLE PROJECTION 		Autophyte Activators	
		MATERIAL: Aluminum			
DEFAULT TOLERANCES: LINEAR: X.±.25 X.X±.1 X.XX±.01 X.XXX±.002		DESCRIPTION: Flange CHECKED BY: XXXXXXXXXXXX DATE: XX/XX/XX DRAWN BY: Nate Wiedenmeyer DATE: 5/4/2018 FILE NAME: Final Assembly.SLDPRT		UNIVERSITY OF IDAHO ME DEPARTMENT	
				PART #:	QTY:
				SCALE: 1:4	SHEET: 3 OF 17

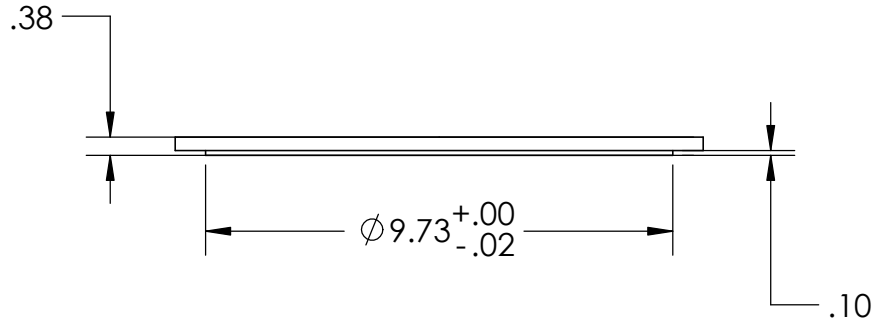
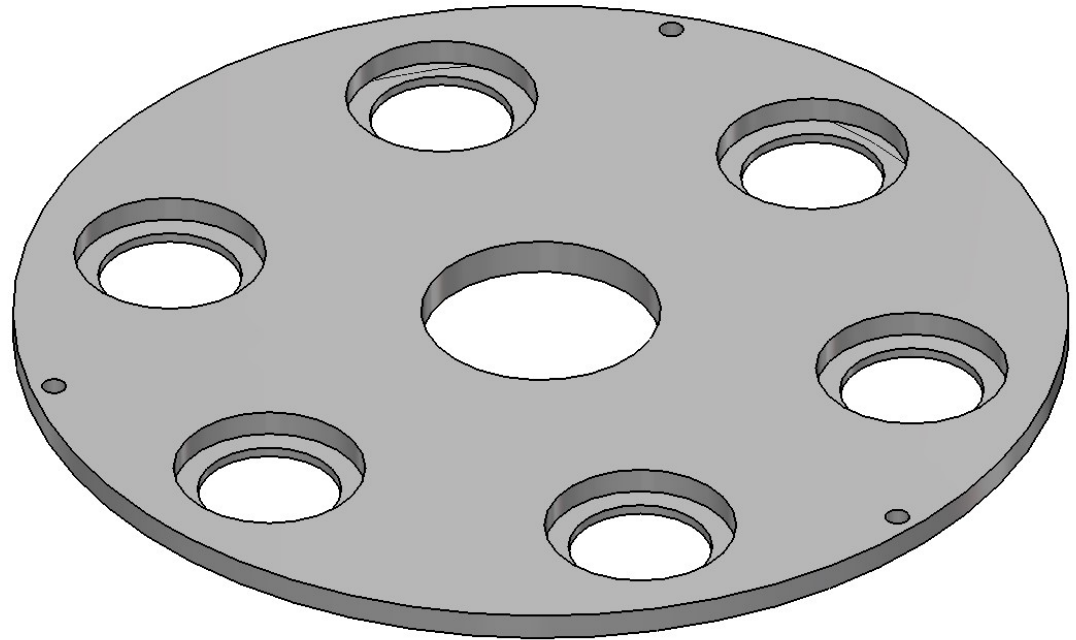
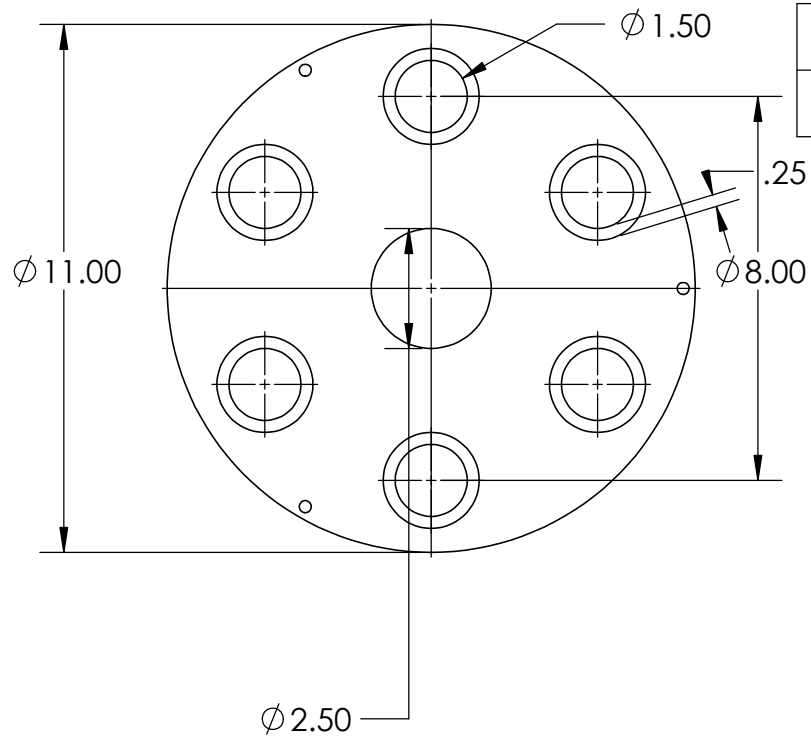


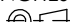
ITEM NO.	PART NUMBER	DESCRIPTION	QTY.
5	03	Acrylic Tube	1

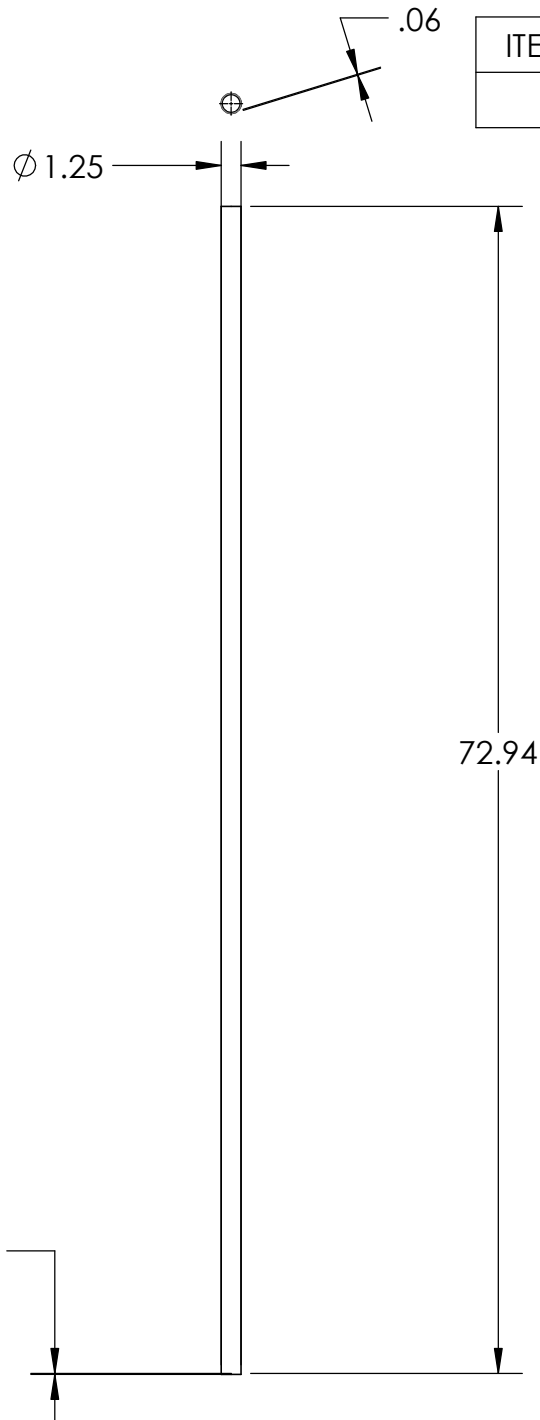


<div>PROPRIETARY AND CONFIDENTIAL</div> <div>THE INFORMATION CONTAINED IN THIS DRAWING IS THE SOLE PROPERTY OF UNIVERSITY OF IDAHO, ME DEPARTMENT. ANY REPRODUCTION IN PART OR AS A WHOLE WITHOUT THE WRITTEN PERMISSION OF UNIVERSITY OF IDAHO, ME DEPARTMENT IS PROHIBITED.</div>		<div>DIMENSIONS ARE IN INCHES</div> <div>THIRD ANGLE PROJECTION</div> <div></div>		<div>Autophyte</div> <div>Activators</div>	
		MATERIAL: Acrylic Tube			
<div>DEFAULT TOLERANCES:</div> <div>LINEAR: X. ±.25 X.X ±.1 X.XX ±.01 X.XXX ±.002</div> <div>ANGULAR: X. ± 2 X.X ± 1 X.XX ± 0 30'</div>		<div>DESCRIPTION: Main Tube</div> <div>CHECKED BY: XXXXXXXXXXXX</div> <div>DATE: XX/XX/XX</div> <div>DRAWN BY: Nate Wiedenmeyer</div> <div>DATE: 5/4/2018</div> <div>FILE NAME: Final Assembly.SLDPRT</div>		<div>UNIVERSITY OF IDAHO</div> <div>ME DEPARTMENT</div> <div>PART #:</div> <div>QTY:</div> <div>SCALE: 1:12</div> <div>SHEET: 4 OF 17</div>	

ITEM NO.	PART NAME	DESCRIPTION	QTY.
04	04	Nylon	1




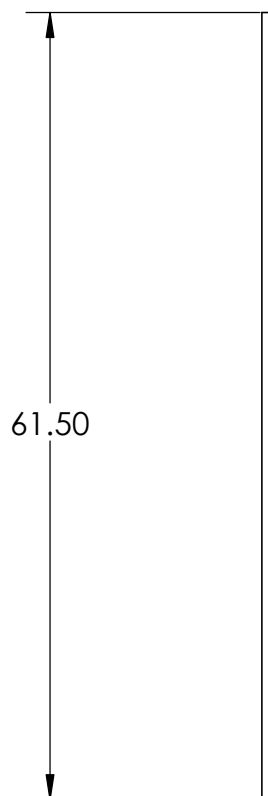
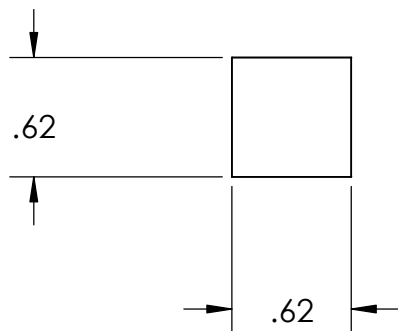
<b>PROPRIETARY AND CONFIDENTIAL</b> THE INFORMATION CONTAINED IN THIS DRAWING IS THE SOLE PROPERTY OF UNIVERSITY OF IDAHO, ME DEPARTMENT. ANY REPRODUCTION IN PART OR AS A WHOLE WITHOUT THE WRITTEN PERMISSION OF UNIVERSITY OF IDAHO, ME DEPARTMENT IS PROHIBITED.		DIMENSIONS ARE IN INCHES THIRD ANGLE PROJECTION 		Autophyte Activators	
		MATERIAL: Nylon			
DEFAULT TOLERANCES:		DESCRIPTION: Lid		UNIVERSITY OF IDAHO ME DEPARTMENT	
LINEAR: X. ± .25 X.X ± .1 X.XX ± .01 X.XXX ± .002	ANGULAR: X. ± 2 X.X ± 1 X.XX ± 0 30'	CHECKED BY: XXXXXXXXXXXX	DATE: XX/XX/XX		
		DRAWN BY: Nate Wiedenmeyer	DATE: 5/4/2018	PART #:	QTY:
		FILE NAME: Final Assembly.SLDPRT		SCALE: 1:4	SHEET: 5 OF 17



ITEM NO.	PART NUMBER	DESCRIPTION	QTY.
05	05	Acrylic Tube	6

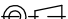


<div>PROPRIETARY AND CONFIDENTIAL</div> <div>THE INFORMATION CONTAINED IN THIS DRAWING IS THE SOLE PROPERTY OF UNIVERSITY OF IDAHO, ME DEPARTMENT. ANY REPRODUCTION IN PART OR AS A WHOLE WITHOUT THE WRITTEN PERMISSION OF UNIVERSITY OF IDAHO, ME DEPARTMENT IS PROHIBITED.</div>		<div>DIMENSIONS ARE IN INCHES</div> <div>THIRD ANGLE PROJECTION</div> <div></div>		<div>Autophyte</div> <div>Activators</div>	
		MATERIAL: Acrylic			
<div>DEFAULT TOLERANCES:</div> <div>LINEAR: X. ± .25 X.X ± .1 X.XX ± .01 X.XXX ± .002</div>		<div>DESCRIPTION: Light Rod</div> <div>CHECKED BY: XXXXXXXXXXXX</div> <div>DATE: XX/XX/XX</div> <div>DRAWN BY: Nate Wiedenmeyer</div> <div>DATE: 5/4/2018</div> <div>FILE NAME: Final Assembly.SLDPRT</div>		<div>UNIVERSITY OF IDAHO</div> <div>ME DEPARTMENT</div>	
<div>ANGULAR: X. ± 2 X.X ± 1 X.XX ± 0 30'</div>				<div>PART #:</div>	<div>QTY:</div>
				<div>SCALE: 1:12</div>	<div>SHEET: 6 OF 17</div>

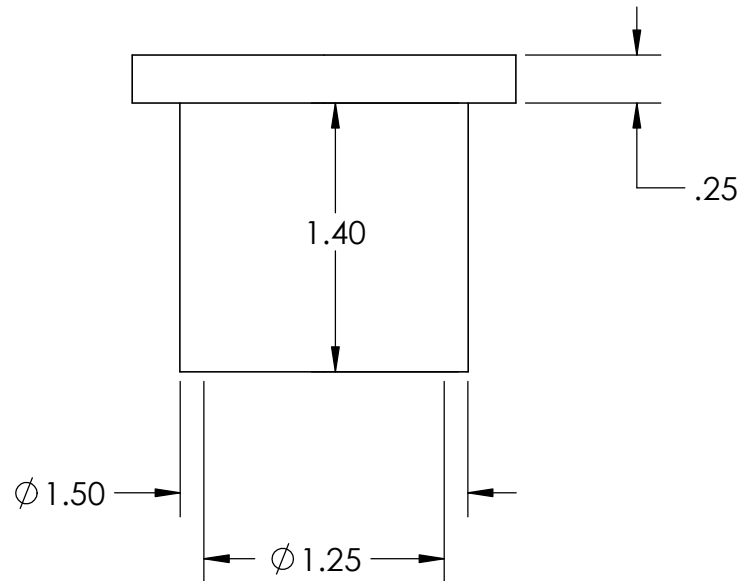
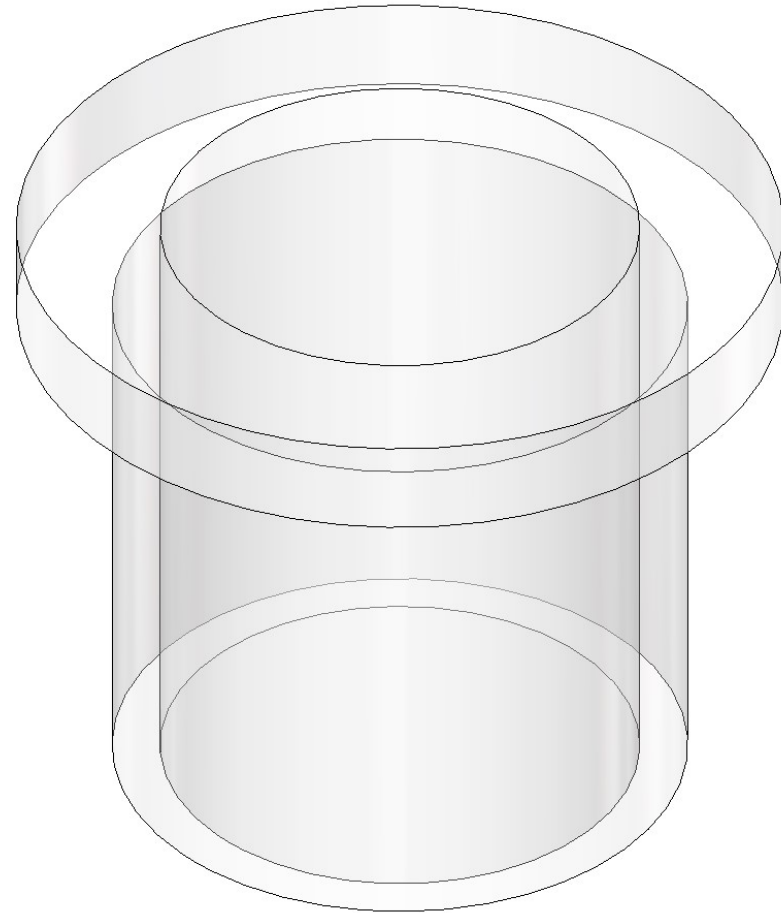
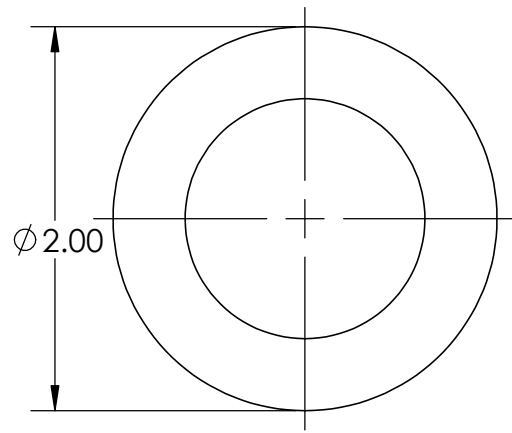


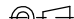
ITEM NO.	PART NAME	DESCRIPTION	QTY.
06	06	Pine Wood	6



<div>PROPRIETARY AND CONFIDENTIAL</div> <div>THE INFORMATION CONTAINED IN THIS DRAWING IS THE SOLE PROPERTY OF UNIVERSITY OF IDAHO, ME DEPARTMENT. ANY REPRODUCTION IN PART OR AS A WHOLE WITHOUT THE WRITTEN PERMISSION OF UNIVERSITY OF IDAHO, ME DEPARTMENT IS PROHIBITED.</div>		<div>DIMENSIONS ARE IN INCHES</div> <div>THIRD ANGLE PROJECTION </div>		<div>Autophyte Activators</div>			
		<div>MATERIAL: Pine Wood</div>					
<div>DEFAULT TOLERANCES:</div>		<div>DESCRIPTION: Light Rod</div>		<div>UNIVERSITY OF IDAHO</div> <div>ME DEPARTMENT</div>			
<div>LINEAR:</div> <div>X. ± .25</div> <div>X.X ± .1</div> <div>X.XX ± .01</div> <div>X.XXX ± .002</div>	<div>ANGULAR:</div> <div>X. ± 2</div> <div>X.X ± 1</div> <div>X.XX ± 0 30'</div>	<div>CHECKED BY: XXXXXXXXXXXX</div>	<div>DATE: XX/XX/XX</div>				
		<div>DRAWN BY: Nate Wiedenmeyer</div>	<div>DATE: 5/4/2018</div>			<div>PART #:</div>	<div>QTY:</div>
		<div>FILE NAME: Final Assembly.SLDPR</div>				<div>SCALE: 1:1</div>	<div>SHEET: 7 OF 17</div>

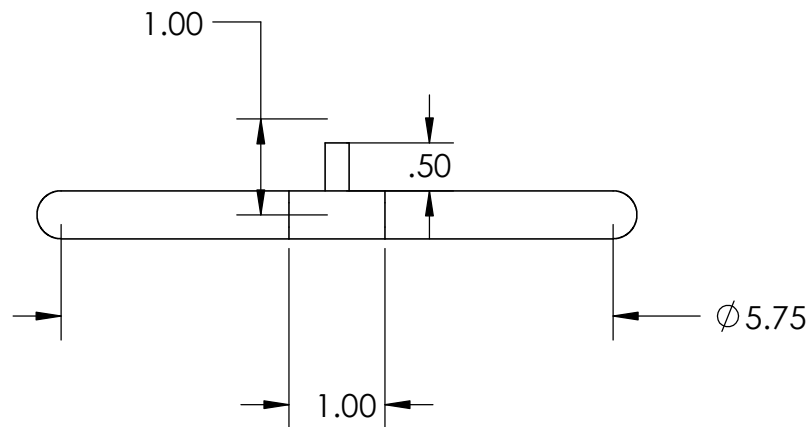
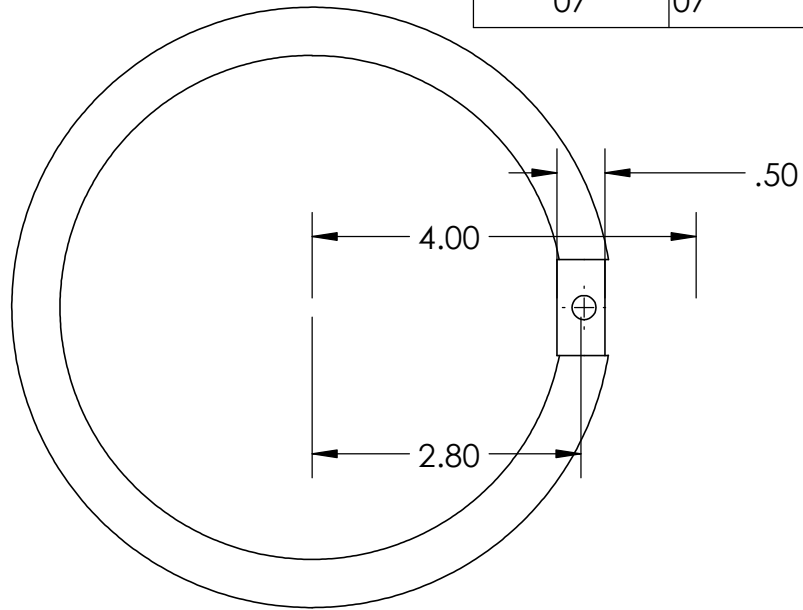
ITEM NO.	PART NAME	DESCRIPTION	QTY.
09	09	Acrylic	6




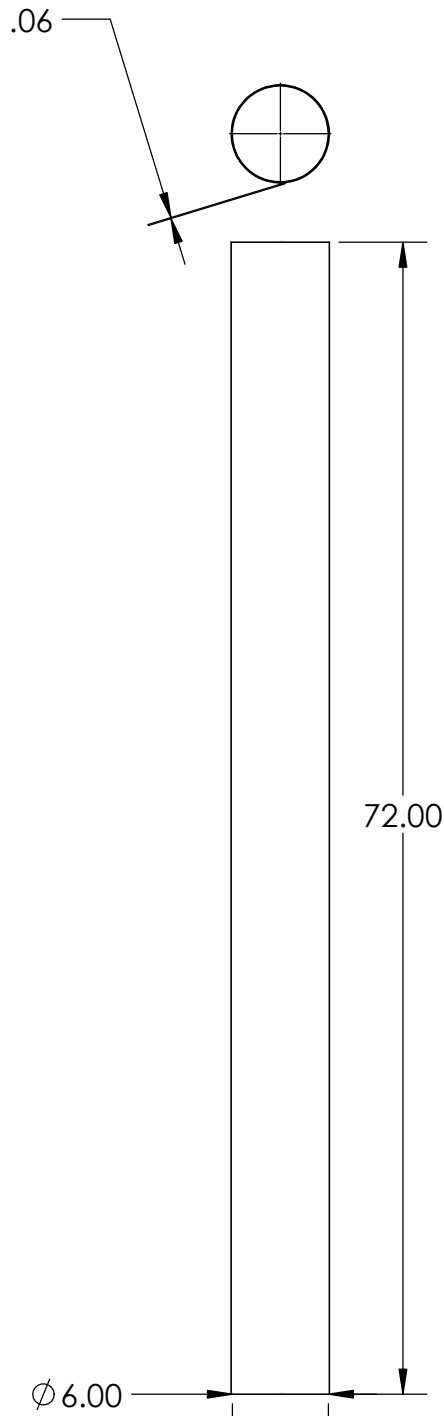
<div>PROPRIETARY AND CONFIDENTIAL</div> <div>THE INFORMATION CONTAINED IN THIS DRAWING IS THE SOLE PROPERTY OF UNIVERSITY OF IDAHO, ME DEPARTMENT. ANY REPRODUCTION IN PART OR AS A WHOLE WITHOUT THE WRITTEN PERMISSION OF UNIVERSITY OF IDAHO, ME DEPARTMENT IS PROHIBITED.</div>		<div>DIMENSIONS ARE IN INCHES</div> <div>THIRD ANGLE PROJECTION</div> <div></div>		<div>Autophyte</div> <div>Activators</div>	
		MATERIAL: Acrylic			
DEFAULT TOLERANCES:		DESCRIPTION: Light Tube Connector		UNIVERSITY OF IDAHO ME DEPARTMENT	
LINEAR: X. ±.25 X.X ±.1 X.XX ±.01 X.XXX ±.002	ANGULAR: X. ± 2 X.X ± 1 X.XX ± 0 30'	CHECKED BY: XXXXXXXXXXXX	DATE: XX/XX/XX		
		DRAWN BY: Nate Wiedenmeyer	DATE: 5/4/2018	PART #:	QTY:
		FILE NAME: Final Assembly.SLDPR1		SCALE: 1:1	SHEET: 8 OF 17



ITEM NO.	PART NUMBER	DESCRIPTION	QTY.
07	07	Perforated Rubber	1



<b>PROPRIETARY AND CONFIDENTIAL</b> THE INFORMATION CONTAINED IN THIS DRAWING IS THE SOLE PROPERTY OF UNIVERSITY OF IDAHO, ME DEPARTMENT. ANY REPRODUCTION IN PART OR AS A WHOLE WITHOUT THE WRITTEN PERMISSION OF UNIVERSITY OF IDAHO, ME DEPARTMENT IS PROHIBITED.		DIMENSIONS ARE IN INCHES THIRD ANGLE PROJECTION 		Autophyte Activators			
		MATERIAL: Rubber					
DEFAULT TOLERANCES:		DESCRIPTION: Gas Sparger				UNIVERSITY OF IDAHO ME DEPARTMENT	
LINEAR: X. ±.25 X.X ±.1 X.XX ±.01 X.XXX ±.002	ANGULAR: X. ±2 X.X ±1 X.XX ±0.30°	CHECKED BY: XXXXXXXXXX	DATE: XX/XX/XX				
		DRAWN BY: Nate Wiedenmeyer	DATE: 5/4/2018	PART #:	QTY:		
		FILE NAME: Final Assembly.SLDPRT		SCALE: 1:2	SHEET: 9 OF 17		



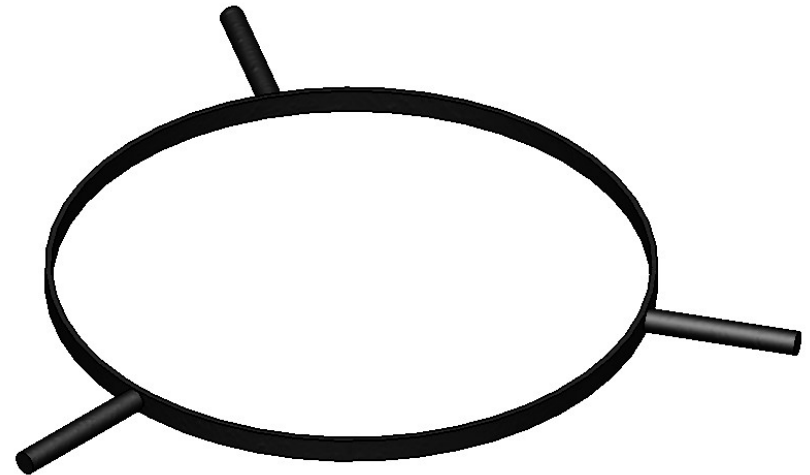
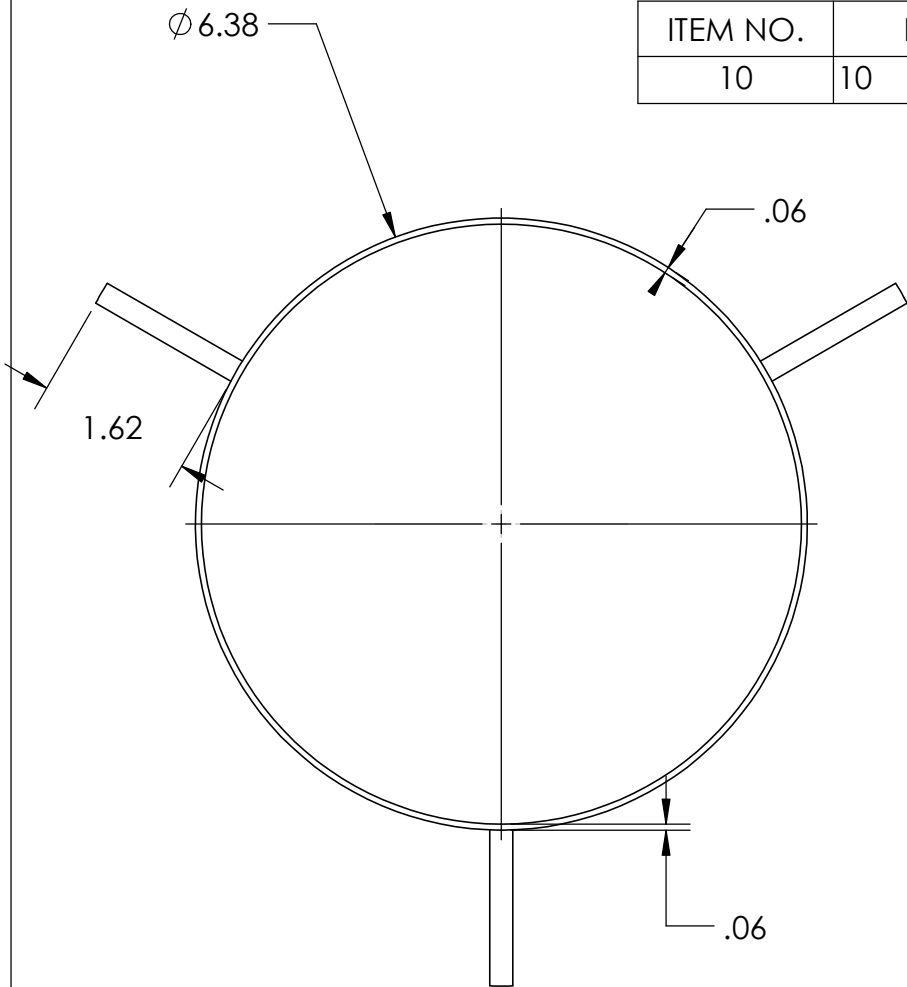
ITEM NO.	PART NUMBER	DESCRIPTION	QTY.
4	Riser Tube	Acrylic Tube	1

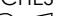


<b>PROPRIETARY AND CONFIDENTIAL</b> THE INFORMATION CONTAINED IN THIS DRAWING IS THE SOLE PROPERTY OF UNIVERSITY OF IDAHO, ME DEPARTMENT. ANY REPRODUCTION IN PART OR AS A WHOLE WITHOUT THE WRITTEN PERMISSION OF UNIVERSITY OF IDAHO, ME DEPARTMENT IS PROHIBITED.		DIMENSIONS ARE IN INCHES THIRD ANGLE PROJECTION		Autophyte Activators	
		Material: Acrylic Tube			
DEFAULT TOLERANCES: LINEAR: X. ± .25 X.X ± .1 X.XX ± .01 X.XXX ± .002		ANGLAR: X. ± 2 X.X ± 1 X.XX ± 0 30'		DESCRIPTION: Riser Tube	
		CHECKED BY: XXXXXXXXXXXX		DATE: XX/XX/XX	
		DRAWN BY: Nate Wiedenmeyer		DATE: 5/4/2018	
		FILE NAME: Final Assembly.SLDPR		PART #:	
				QTY:	
				SCALE: 1:12	
				SHEET: 10 OF 17	

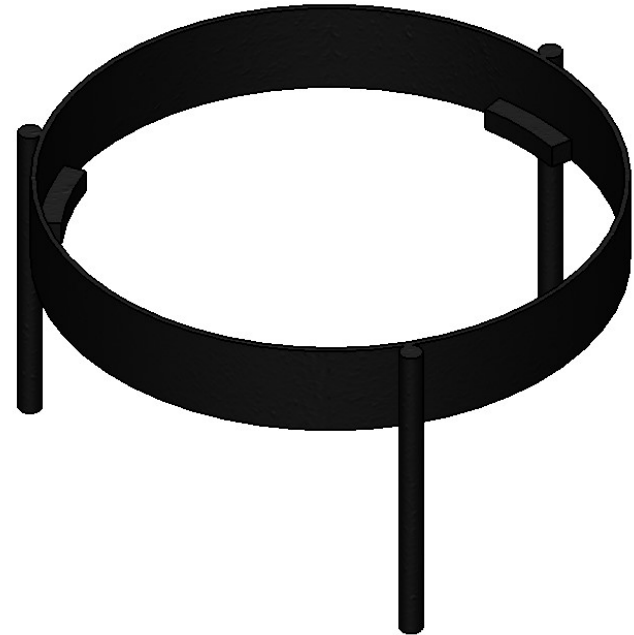
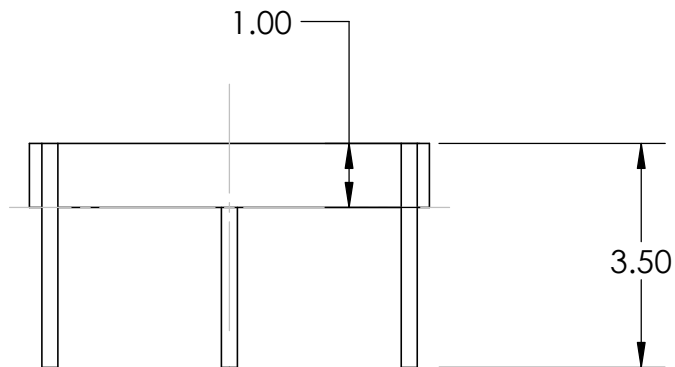
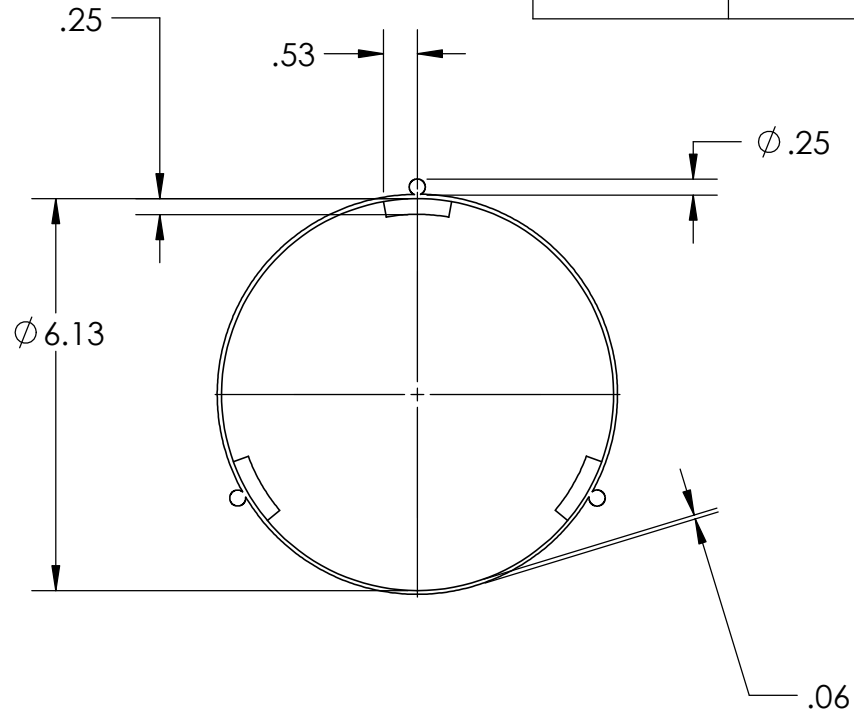
**UNIVERSITY OF IDAHO  
ME DEPARTMENT**

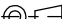
ITEM NO.	PART NUMBER	DESCRIPTION	QTY.
10	10	Steel Ring and Bolts	1



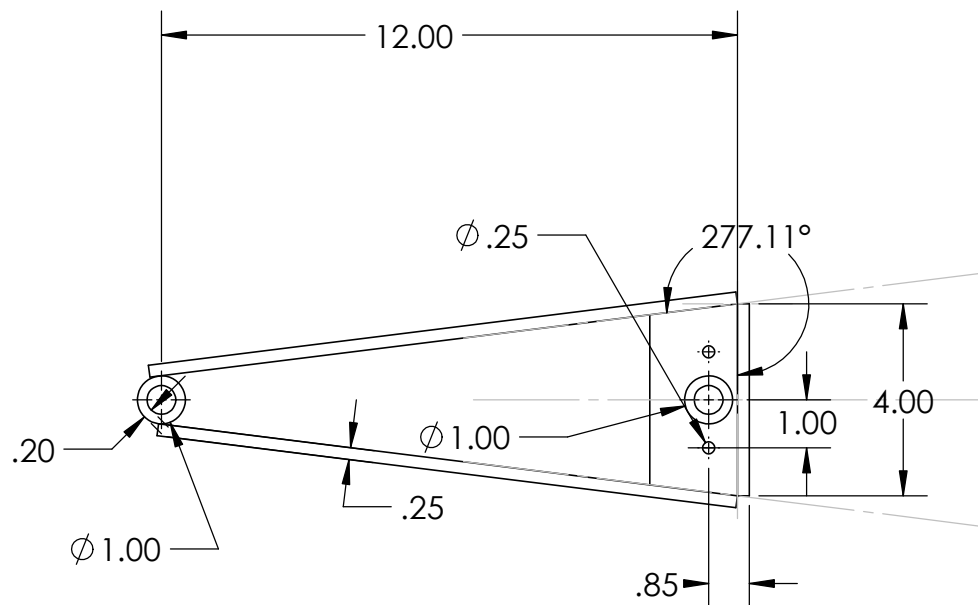
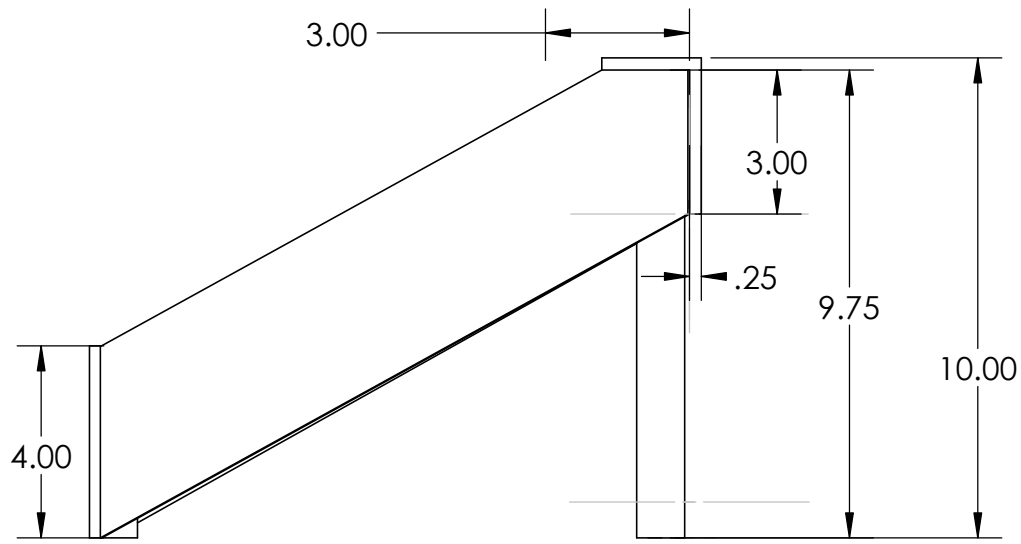
<b>PROPRIETARY AND CONFIDENTIAL</b> THE INFORMATION CONTAINED IN THIS DRAWING IS THE SOLE PROPERTY OF UNIVERSITY OF IDAHO, ME DEPARTMENT. ANY REPRODUCTION IN PART OR AS A WHOLE WITHOUT THE WRITTEN PERMISSION OF UNIVERSITY OF IDAHO, ME DEPARTMENT IS PROHIBITED.		DIMENSIONS ARE IN INCHES THIRD ANGLE PROJECTION 		Autophyte Activators	
		Material: Steel			
DEFAULT TOLERANCES:		DESCRIPTION: RiserTube Holder Ring		UNIVERSITY OF IDAHO ME DEPARTMENT	
LINEAR: X.±.25 X.X±.1 X.XX±.01 X.XXX±.002	ANGULAR: X.±2 X.X±1 X.XX±0.30°	CHECKED BY: XXXXXXXXXX	DATE: XX/XX/XX		
		DRAWN BY: Nate Wiedenmeyer	DATE: 5/4/2018	PART #:	QTY: 1
		FILE NAME: Final Assembly.SLDPRT		SCALE: 1:12	SHEET: 11 OF 17

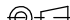
ITEM NO.	PART NUMBER	DESCRIPTION	QTY.
11	11	Steal Ring and Rods	1



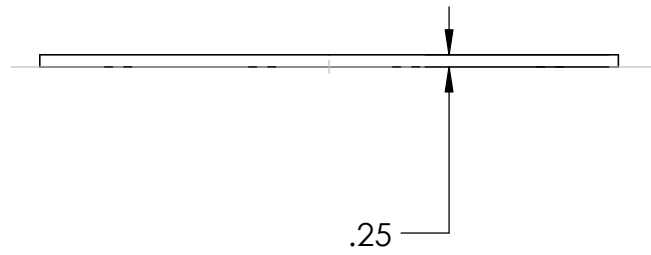
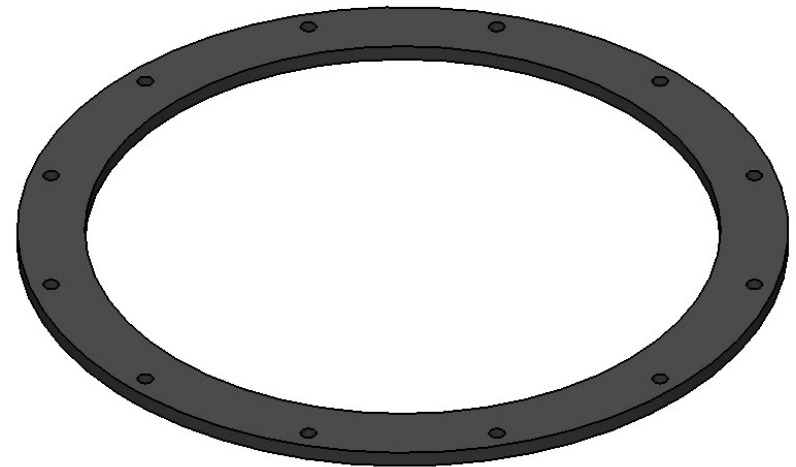
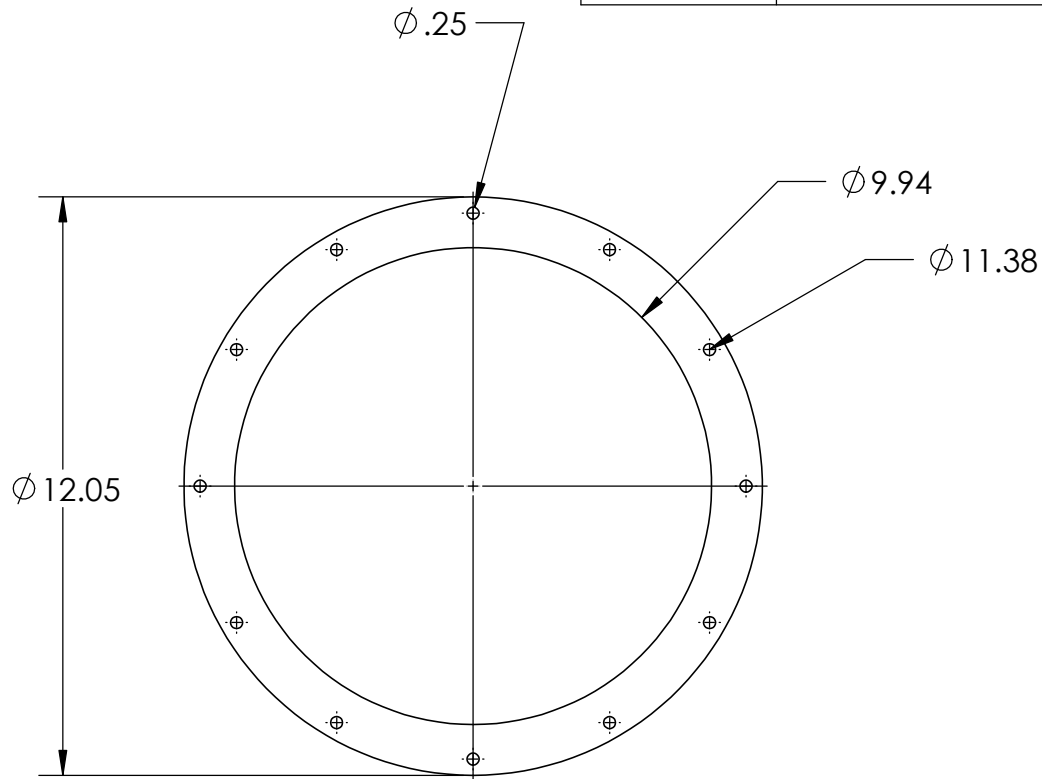
<b>PROPRIETARY AND CONFIDENTIAL</b> THE INFORMATION CONTAINED IN THIS DRAWING IS THE SOLE PROPERTY OF UNIVERSITY OF IDAHO, ME DEPARTMENT. ANY REPRODUCTION IN PART OR AS A WHOLE WITHOUT THE WRITTEN PERMISSION OF UNIVERSITY OF IDAHO, ME DEPARTMENT IS PROHIBITED.		DIMENSIONS ARE IN INCHES THIRD ANGLE PROJECTION 		Autophyte Activators	
		Material: <b>Steel</b>			
DEFAULT TOLERANCES:		DESCRIPTION: <b>Riser Holder Base</b>		<b>UNIVERSITY OF IDAHO ME DEPARTMENT</b>	
LINEAR: X. ± .25 X.X ± .1 X.XX ± .01 X.XXX ± .002	ANGULAR: X. ± 2 X.X ± 1 X.XX ± 0 30'	CHECKED BY: XXXXXXXXXX	DATE: XX/XX/XX		
		DRAWN BY: Nate Wiedenmeyer	DATE: 5/4/2018	PART #: 11	QTY: 1
		FILE NAME: <b>Final Assembly.SLDPRT</b>	SCALE: 1:3	SHEET: 12 OF 17	

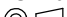
ITEM NO.	PART NUMBER	DESCRIPTION	QTY.
15	15	Steel Plate	3



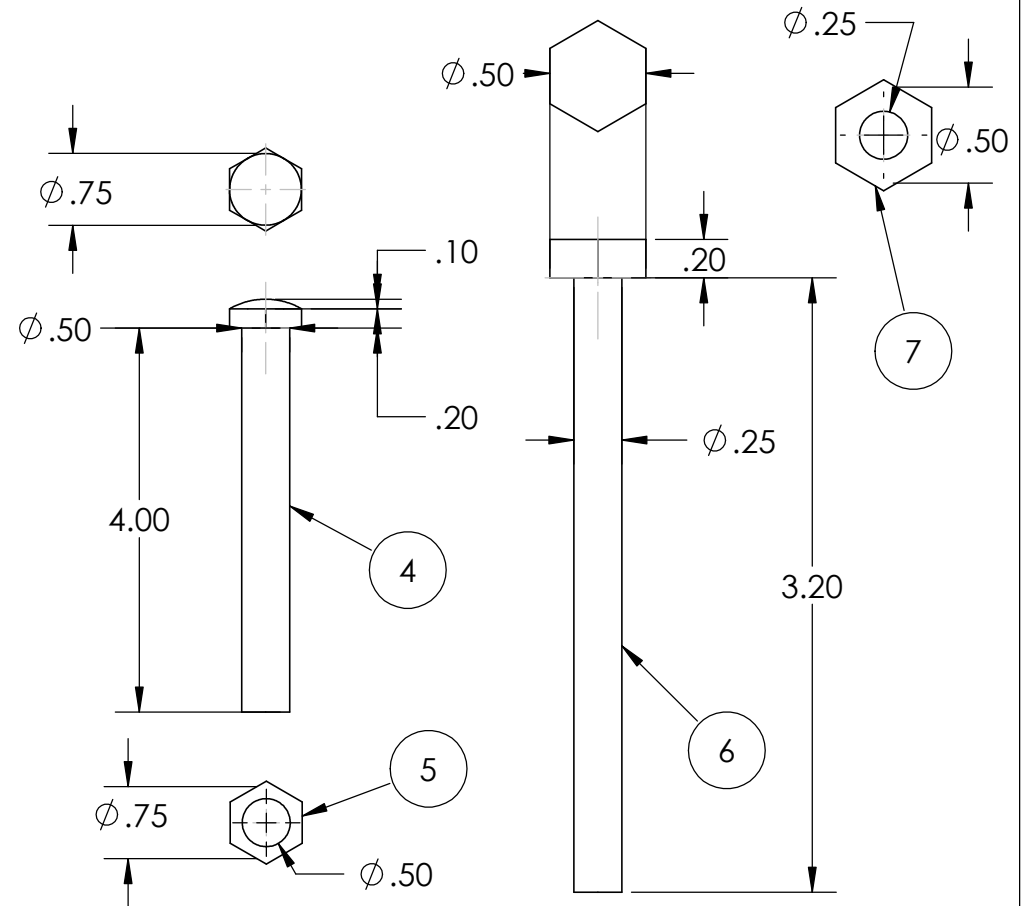
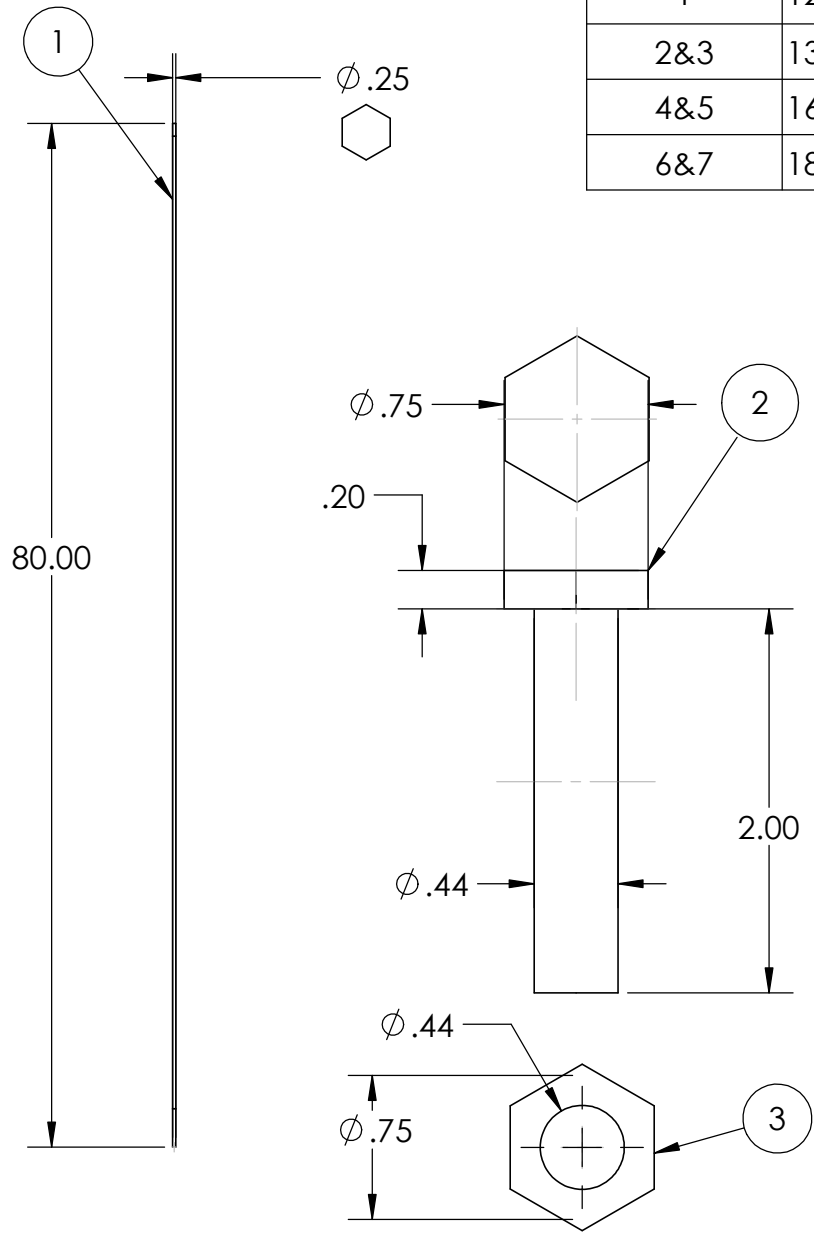
<b>PROPRIETARY AND CONFIDENTIAL</b> THE INFORMATION CONTAINED IN THIS DRAWING IS THE SOLE PROPERTY OF UNIVERSITY OF IDAHO, ME DEPARTMENT. ANY REPRODUCTION IN PART OR AS A WHOLE WITHOUT THE WRITTEN PERMISSION OF UNIVERSITY OF IDAHO, ME DEPARTMENT IS PROHIBITED.		DIMENSIONS ARE IN INCHES THIRD ANGLE PROJECTION 		Autophyte Activators	
		Material: Steel			
DEFAULT TOLERANCES:		DESCRIPTION: Stand		UNIVERSITY OF IDAHO ME DEPARTMENT	
LINEAR: X. ±.25 X.X ±.1 X.XX ±.01 X.XXX ±.002	ANGULAR: X. ±.2 X.X ±.1 X.XX ±.0 30'	CHECKED BY: XXXXXXXXXXXX	DATE: XX/XX/XX		
		DRAWN BY: Nate Wiedenmeyer	DATE: 5/4/2018	PART #: 15	QTY: 1
		FILE NAME: Final Assembly.SLDPR		SCALE: 1:3	SHEET: 13 OF 17

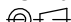
ITEM NO.	PART NUMBER	DESCRIPTION	QTY.
24	24	Silicone Rubber	1

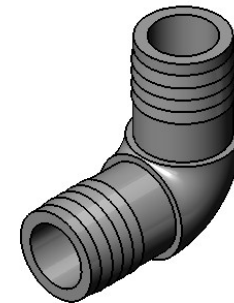
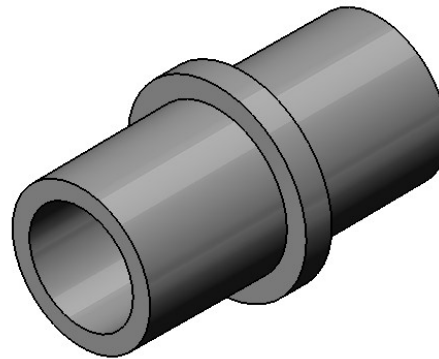
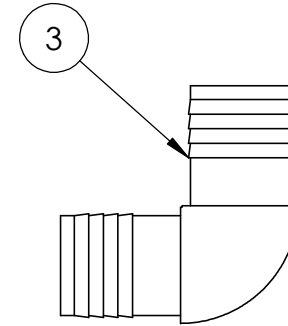
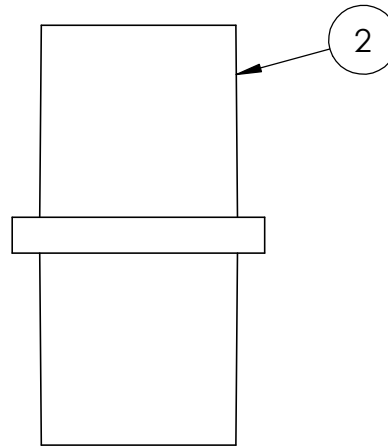
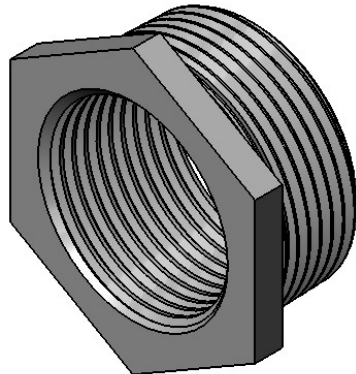
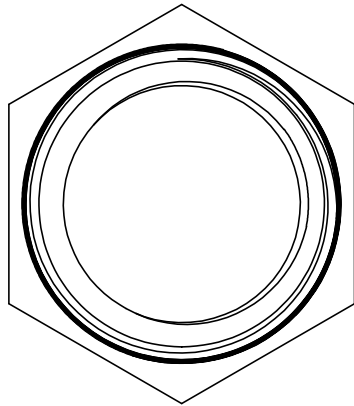
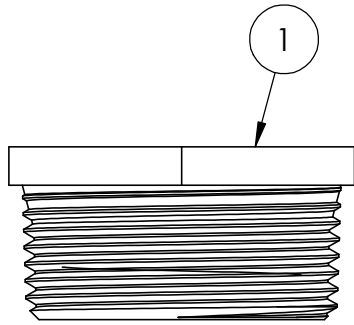


<b>PROPRIETARY AND CONFIDENTIAL</b> THE INFORMATION CONTAINED IN THIS DRAWING IS THE SOLE PROPERTY OF UNIVERSITY OF IDAHO, ME DEPARTMENT. ANY REPRODUCTION IN PART OR AS A WHOLE WITHOUT THE WRITTEN PERMISSION OF UNIVERSITY OF IDAHO, ME DEPARTMENT IS PROHIBITED.		DIMENSIONS ARE IN INCHES THIRD ANGLE PROJECTION 		Autophyte Activators	
		Material: Silicone Rubber			
DEFAULT TOLERANCES:		DESCRIPTION: Gasket		UNIVERSITY OF IDAHO ME DEPARTMENT	
LINEAR: X. ± .25 X.X ± .1 X.XX ± .01 X.XXX ± .002	ANGULAR: X. ± 2 X.X ± 1 X.XX ± 0 30'	CHECKED BY: XXXXXXXXXXXX	DATE: XX/XX/XX		
		DRAWN BY: Nate Wiedenmeyer	DATE: 5/4/2018	PART #: 24	QTY: 1
		FILE NAME: Final Assembly.SLDPRT		SCALE: 1:3	SHEET: 14 OF 17


ITEM NO.	PART NUMBER	DESCRIPTION	QTY.
1	12	.25" Steel Allthread and Wing nuts	3
2&3	13&14	.44" Bolt & Nut for Stand	6
4&5	16&17	.5" Round Head Bolt & Nut for Stand	6
6&7	18&19	.25" Bolt and Nut for Base	9&9



<b>PROPRIETARY AND CONFIDENTIAL</b> THE INFORMATION CONTAINED IN THIS DRAWING IS THE SOLE PROPERTY OF UNIVERSITY OF IDAHO, ME DEPARTMENT. ANY REPRODUCTION IN PART OR AS A WHOLE WITHOUT THE WRITTEN PERMISSION OF UNIVERSITY OF IDAHO, ME DEPARTMENT IS PROHIBITED.		DIMENSIONS ARE IN INCHES THIRD ANGLE PROJECTION 		Autophyte Activators	
		Material: Steel			
DEFAULT TOLERANCES:		DESCRIPTION: Fasteners to be Purchased		UNIVERSITY OF IDAHO ME DEPARTMENT	
LINEAR: X. ±.25 X.X ±.1 X.XX ±.01 X.XXX ±.002	ANGULAR: X. ±2 X.X ±1 X.XX ±0 30'	CHECKED BY: XXXXXXXXXX	DATE: XX/XX/XX		
		DRAWN BY: Nate Wiedenmeyer	DATE: 5/4/2018	PART #: 12 - 19	QTY: Various
		FILE NAME: Final Assembly.SLDPR1		SCALE: 1:12	SHEET: 15 OF 17

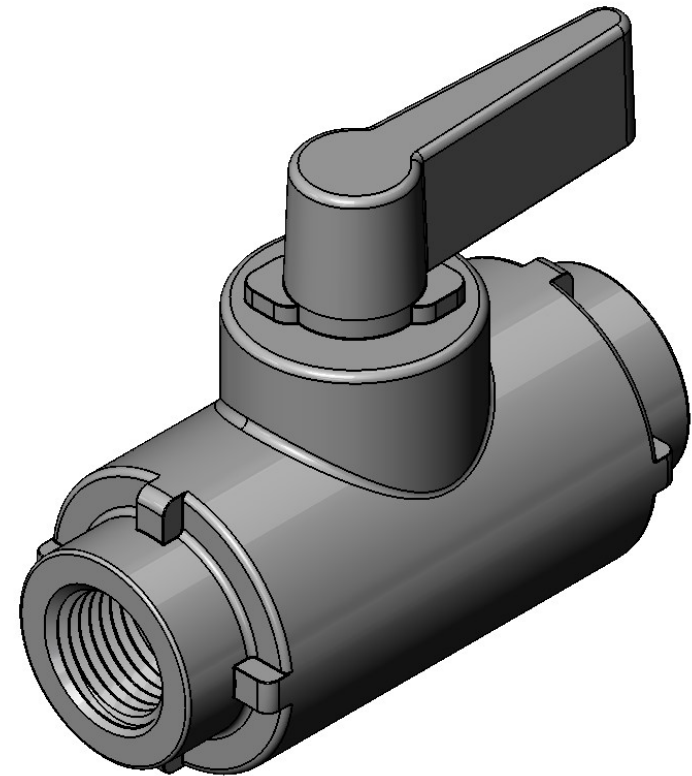
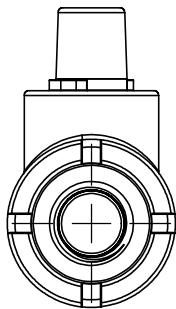
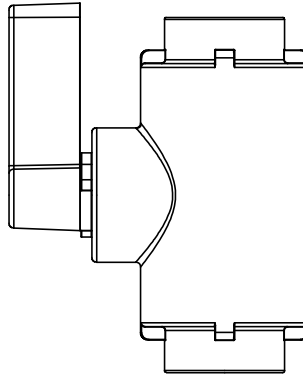
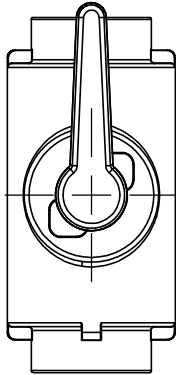



ITEM NO.	PART NUMBER	DESCRIPTION	QTY.
1	15	Steal Plate	1
2	21	1" Threaded Male Connector	1
3	23	1" NPT Elbow 1 Threaded 1 Barbed	1

<div>PROPRIETARY AND CONFIDENTIAL</div> <div>THE INFORMATION CONTAINED IN THIS DRAWING IS THE SOLE PROPERTY OF UNIVERSITY OF IDAHO, ME DEPARTMENT. ANY REPRODUCTION IN PART OR AS A WHOLE WITHOUT THE WRITTEN PERMISSION OF UNIVERSITY OF IDAHO, ME DEPARTMENT IS PROHIBITED.</div>		<div>DIMENSIONS ARE IN INCHES</div> <div>THIRD ANGLE PROJECTION </div> <div>Material: PVC</div>		<div>Autophyte</div> <div>Activators</div>	
<div>DEFAULT TOLERANCES:</div> <div>LINEAR: X. ± .25 X.X ± .1 X.XX ± .01 X.XXX ± .002</div> <div>ANGULAR: X. ± 2 X.X ± 1 X.XX ± 0 30'</div>		<div>DESCRIPTION: Plumbing to be Purchased</div> <div>CHECKED BY: XXXXXXXXXXXX</div> <div>DATE: XX/XX/XX</div> <div>DRAWN BY: Nate Wiedenmeyer</div> <div>DATE: 5/4/2018</div> <div>FILE NAME: Final Assembly.SLDPR</div>		<div>UNIVERSITY OF IDAHO</div> <div>ME DEPARTMENT</div> <div>PART #: 20 - 23</div> <div>QTY: Various</div> <div>SCALE: 1:12</div> <div>SHEET: 16 OF 17</div>	



ITEM NO.	PART NUMBER	DESCRIPTION	QTY.
22	22	1" NPT Threaded Ball Valve	1



<b>PROPRIETARY AND CONFIDENTIAL</b> THE INFORMATION CONTAINED IN THIS DRAWING IS THE SOLE PROPERTY OF UNIVERSITY OF IDAHO, ME DEPARTMENT. ANY REPRODUCTION IN PART OR AS A WHOLE WITHOUT THE WRITTEN PERMISSION OF UNIVERSITY OF IDAHO, ME DEPARTMENT IS PROHIBITED.		<b>DIMENSIONS ARE IN INCHES</b> THIRD ANGLE PROJECTION 		<b>Autophyte Activators</b>	
		Material: PVC			
DEFAULT TOLERANCES:		<b>UNIVERSITY OF IDAHO ME DEPARTMENT</b>			
DESCRIPTION: Drainage Ball Valve					
LINEAR: X. ± .25 X.X ± .1 X.XX ± .01 X.XXX ± .002	ANGULAR: X. ± 2 X.X ± 1 X.XX ± 0 30'	CHECKED BY: XXXXXXXXXX	DATE: XX/XX/XX	PART #:	22
		DRAWN BY: Nate Wiedenmeyer	DATE: 5/4/2018	QTY:	1
		FILE NAME: Final Assembly.SLDPRT	SCALE: 1:3	SHEET: 17 OF 17	